

## FILLABLE PDF ORDER FORM USAGE INSTRUCTIONS

For your convenience and processing efficiency, this order form contains fillable pdf fields that can be filled in electronically via **Adobe® Acrobat®** or **Adobe® Reader®** and then saved, printed and/or submitted to our Customer Service team for order or quote processing.

Please follow the following steps to complete this form\* electronically based on the Adobe software you currently have on your operating system.

[Click here](#) to download Adobe Reader for free or to purchase Adobe Acrobat software.

### USERS WITH **ADOBE ACROBAT**

#### TO SAVE ELECTRONIC COPY:

1. Fill out the order form completely
2. In the top navigation menu, go to FILE, then SAVE AS
3. Rename the file and select the destination where you'd like the file saved and save

#### TO SUBMIT FOR ORDER OR QUOTE:

1. Follow instructions above for saving a copy of the file
2. Click on the "Submit" button at the top of the first page of the completed and saved order form.
3. This action will open up a pop-up asking you to select your E-mail client. Select which one is applicable to you and then OK. (See figure 1)
4. The next pop-up will ask you if you want to send a data file or print the form. Select SEND DATA FILE (See figure 2)
5. An e-mail message will pop up with the order form as an attachment.
6. You may want to copy yourself to keep as a record
7. Send e-mail.

Figure 1

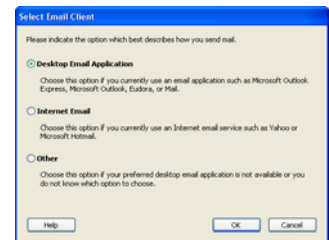
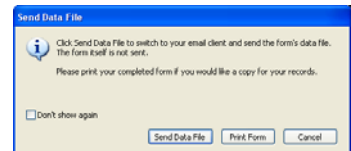


Figure 2



### USERS WITH **ADOBE READER**

#### TO SAVE ELECTRONIC COPY:

1. Fill out the order form completely (Please note that you will **not** be able to make any additional changes once the order form is saved).
2. In the top navigation menu, go to FILE, then PRINT
3. Select Adobe PDF from your list of printers and print the file
4. Select the destination where you would like the file saved, rename the file and save

#### TO SUBMIT FOR ORDER OR QUOTE:

1. Follow the document saving instructions listed above
2. Attach your saved file to an e-mail and send to the following e-mail box: [orders@sunmed.com](mailto:orders@sunmed.com)

*\*Please note that this order forms fillable fields are not programmed with logic and the fields will not prevent you from selecting options that are no-go's so please review the footnotes carefully. Sunrise Medical does offer an online product configurator that's programmed with all no-go information. To complete an order on the configurator, please visit [www.sunrisemedical.com](http://www.sunrisemedical.com) and log-in to your dealer account.*



# JAY<sup>®</sup> BASIC<sup>PRO</sup> Cushion April 2013

**Mark For:**

**Submitting for:**

Quote

Order

Date: \_\_\_\_\_

PO#: \_\_\_\_\_

Dealer Acct #: \_\_\_\_\_

Dealer: \_\_\_\_\_

**ADDITIONAL SHIPPING INFORMATION**

Dealer Contact: \_\_\_\_\_

Ship To: \_\_\_\_\_

Dealer Address: \_\_\_\_\_

Attention: \_\_\_\_\_

Dealer City: \_\_\_\_\_ ST: \_\_\_\_\_ ZIP: \_\_\_\_\_

Address: \_\_\_\_\_

Dealer Phone: ( ) \_\_\_\_\_ Fax: ( ) \_\_\_\_\_

Address: \_\_\_\_\_

Confirmation Email: \_\_\_\_\_

Ship To City: \_\_\_\_\_ ST: \_\_\_\_\_ ZIP: \_\_\_\_\_

Confirm Via:  Fax  Email

Ship To Phone: ( ) \_\_\_\_\_ Fax: ( ) \_\_\_\_\_

The **HCPCS CODES** provided are based on code verification through PDAC or our interpretation of the code definitions.  
The use of **HCPCS CODES** does not ensure coverage or payment. For coverage information, verify the appropriate payer's coverage policy.

**Actual**

✓ Option # HCPCS Definition Width Depth Price

JAY BASIC <sup>PRO</sup> CUSHION Less than 22" in Width (300lb weight capacity)						
<input type="checkbox"/>	JBASICP1414	E2601	JAY BASIC <sup>PRO</sup> Cushion 14" X 14"	13-3/4"	14"	\$120.00
<input type="checkbox"/>	JBASICP1416	E2601	JAY BASIC <sup>PRO</sup> Cushion 14" X 16"	13-3/4"	16"	\$120.00
<input type="checkbox"/>	JBASICP1418	E2601	JAY BASIC <sup>PRO</sup> Cushion 14" X 18"	13-3/4"	18"	\$120.00
<input type="checkbox"/>	JBASICP1518	E2601	JAY BASIC <sup>PRO</sup> Cushion 15" X 18"	14-3/4"	18"	\$120.00
<input type="checkbox"/>	JBASICP15516	E2601	JAY BASIC <sup>PRO</sup> Cushion 15.5" X 16"	15-1/4"	16"	\$120.00
<input type="checkbox"/>	JBASICP1617	E2601	JAY BASIC <sup>PRO</sup> Cushion 16" X 17"	15-3/4"	17"	\$120.00
<input type="checkbox"/>	JBASICP1618	E2601	JAY BASIC <sup>PRO</sup> Cushion 16" X 18"	15-3/4"	18"	\$120.00
<input type="checkbox"/>	JBASICP1620	E2601	JAY BASIC <sup>PRO</sup> Cushion 16" X 20"	15-3/4"	20"	\$120.00
<input type="checkbox"/>	JBASICP1716	E2601	JAY BASIC <sup>PRO</sup> Cushion 17" X 16"	17"	16"	\$120.00
<input type="checkbox"/>	JBASICP1717	E2601	JAY BASIC <sup>PRO</sup> Cushion 17" X 17"	17"	17"	\$120.00
<input type="checkbox"/>	JBASICP1718	E2601	JAY BASIC <sup>PRO</sup> Cushion 17" X 18"	17"	18-1/2"	\$120.00
<input type="checkbox"/>	JBASICP1816	E2601	JAY BASIC <sup>PRO</sup> Cushion 18" X 16"	17-1/2"	16"	\$120.00
<input type="checkbox"/>	JBASICP1817	E2601	JAY BASIC <sup>PRO</sup> Cushion 18" X 17"	17-1/2"	17-1/2"	\$120.00
<input type="checkbox"/>	JBASICP1818	E2601	JAY BASIC <sup>PRO</sup> Cushion 18" X 18"	17-1/2"	18"	\$120.00
<input type="checkbox"/>	JBASICP1820	E2601	JAY BASIC <sup>PRO</sup> Cushion 18" X 20"	17-3/4"	20"	\$120.00
<input type="checkbox"/>	JBASICP1916	E2601	JAY BASIC <sup>PRO</sup> Cushion 19" X 16"	18-3/4"	16-1/2"	\$120.00
<input type="checkbox"/>	JBASICP1917	E2601	JAY BASIC <sup>PRO</sup> Cushion 19" X 17"	18-3/4"	17-1/2"	\$120.00
<input type="checkbox"/>	JBASICP1918	E2601	JAY BASIC <sup>PRO</sup> Cushion 19" X 18"	18-3/4"	18-1/4"	\$120.00
<input type="checkbox"/>	JBASICP1920	E2601	JAY BASIC <sup>PRO</sup> Cushion 19" X 20"	18-3/4"	20"	\$120.00
<input type="checkbox"/>	JBASICP2016	E2601	JAY BASIC <sup>PRO</sup> Cushion 20" X 16"	19-3/4"	16-1/2"	\$120.00
<input type="checkbox"/>	JBASICP2018	E2601	JAY BASIC <sup>PRO</sup> Cushion 20" X 18"	19-3/4"	18"	\$120.00
<input type="checkbox"/>	JBASICP2020	E2601	JAY BASIC <sup>PRO</sup> Cushion 20" X 20"	19-1/2"	20"	\$120.00

JAY BASIC <sup>PRO</sup> CUSHION 22" in Width and Greater (500lb weight capacity)						
<input type="checkbox"/>	JBASICP2218	E2602	JAY BASIC <sup>PRO</sup> Cushion 22" X 18"	21-3/4"	18"	\$220.00
<input type="checkbox"/>	JBASICP2220	E2602	JAY BASIC <sup>PRO</sup> Cushion 22" X 20"	21-3/4"	20"	\$220.00
<input type="checkbox"/>	JBASICP2222	E2602	JAY BASIC <sup>PRO</sup> Cushion 22" X 22"	21-3/4"	22-1/2"	\$220.00
<input type="checkbox"/>	JBASICP2418	E2602	JAY BASIC <sup>PRO</sup> Cushion 24" X 18"	23-3/4"	18"	\$220.00
<input type="checkbox"/>	JBASICP2420	E2602	JAY BASIC <sup>PRO</sup> Cushion 24" X 20"	23-3/4"	20"	\$220.00
<input type="checkbox"/>	JBASICP2422	E2602	JAY BASIC <sup>PRO</sup> Cushion 24" X 22"	23-1/2"	22-1/2"	\$220.00
<input type="checkbox"/>	JBASICP2424	E2602	JAY BASIC <sup>PRO</sup> Cushion 24" X 24"	23-1/2"	24"	\$220.00

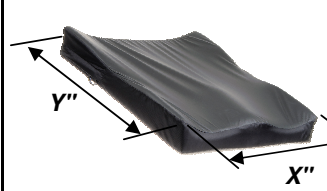
JAY BASIC <sup>PRO</sup> OPTIONAL INNER COVER						
<input type="checkbox"/>	ICJBASICPXXYY	K0108	JAY BASIC <sup>PRO</sup> Inner Cover		See Above	\$60.00

Note: To order an optional inner cover simply add a separate line item to your order. The part number for the inner cover is the same as the cushion with "IC" added to the beginning.

JAY Basic <sup>Pro</sup> Size Matrix													
		WIDTH											
		14	15	15.5	16	17	18	19	20	21	22	23	24
DEPTH	14		JYW	JYW	JYW	JYW	JYW	JYW	JYW	N/A	N/A	N/A	N/A
	15	JYW	JYW	JYW	JYW	JYW	JYW	JYW	JYW	N/A	N/A	N/A	N/A
	16	JYW		JYW						JYW	JYW	JYW	JYW
	17	JYW	JYW	JYW						JYW	JYW	JYW	JYW
	18			JYW						JYW		JYW	
	19	N/A	JYW	JYW	JYW	JYW	JYW	JYW	JYW	JYW	JYW	JYW	JYW
	20	N/A	JYW	JYW		JYW					JYW		JYW
	21	N/A	N/A	N/A	N/A	N/A	N/A	N/A	N/A	JYW	JYW	JYW	JYW
	22	N/A	N/A	N/A	N/A	N/A	N/A	N/A	N/A	JYW	JYW		JYW
	23	N/A	N/A	N/A	N/A	N/A	N/A	N/A	N/A	N/A	N/A	JYW	JYW
24	N/A	N/A	N/A	N/A	N/A	N/A	N/A	N/A	N/A	N/A	JYW	JYW	

= Standard Offering  
 JYW = Offered Via Jay Your Way  
 N/A = Not available

**JAY Basic<sup>Pro</sup> Measuring Guide**  
 Measurements made from completed cushion with covers.



**Width**  
X = Width  
Note: Measurement made from top outside edge to top outside edge of the cushion.  
Ex: JBASICP1620 X=15-3/4"

**Depth**  
Y = Depth  
Note: Measurement made from front top edge and rear top edge of cushion.  
Ex: JBASICP1620 Y = 20"

**JAY YOUR WAY MODIFICATIONS**

Note: To order sizes offered via JAY Your Way add a "M" to the front of the part number and follow the prompts. Please refer to the "JAY YOUR WAY" product catalog for complete listing of modifications

Please visit [www.sunparts.us](http://www.sunparts.us) for spare parts information.

